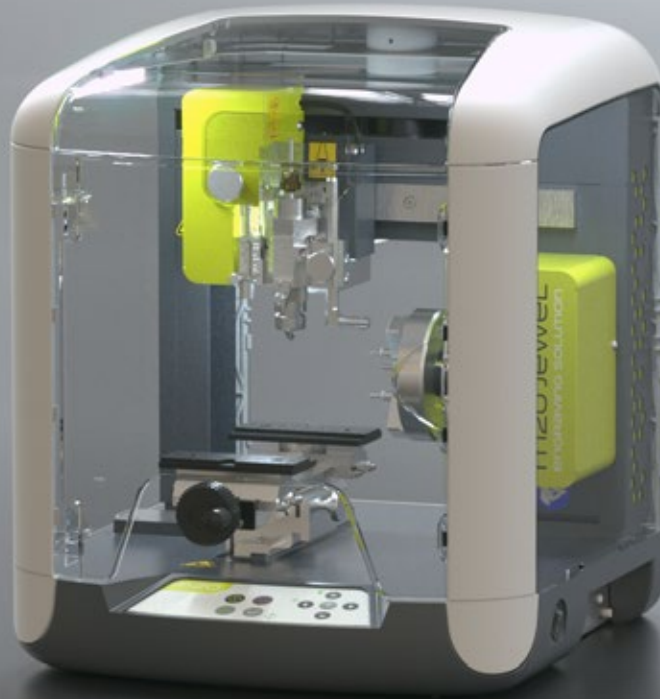




GRAVOGRAPH

GRAVOTECH GROUP



ROTARY ENGRAVING SOLUTION



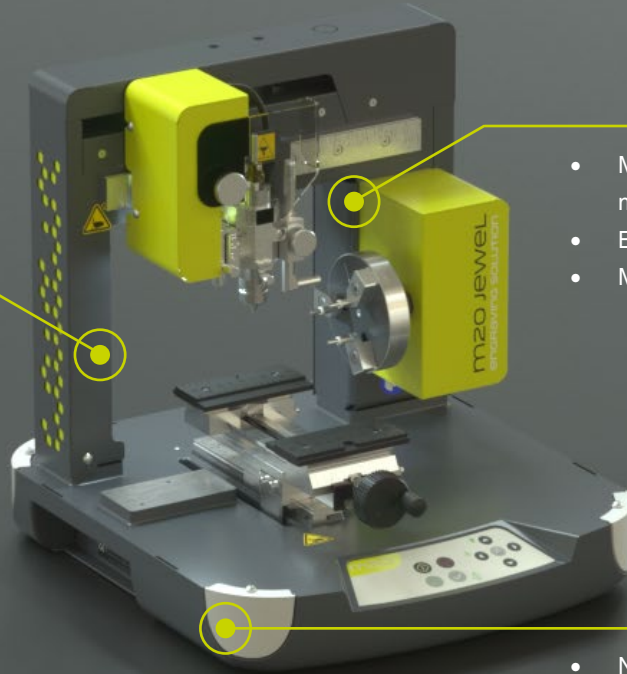
m20

EASY TO USE - MODULAR - STRONG



EASY-TO-USE

- Automatic height measurement and surface tracking.
- Positioning assistance: self-centering vice, point & shoot and engraving preview.
- Unobstructed access.



MODULAR

- Modular system to adapt the machine to your specific needs.
- Engrave on all materials.
- Many accessories available.

STRONG

- New sturdy bridge design.
- Metallic parts and new stronger spindle.
- Made to last decades!

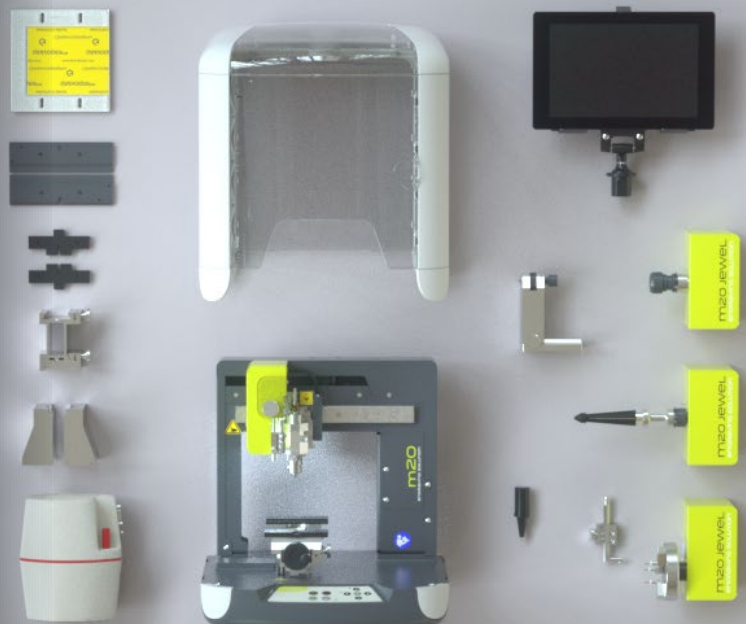
ADAPTING TO WORK WITH YOU

- + Start with the M20 that suites your current business the best.

- + The range of accessories and modules available enables the M20 to always be your primary small engraving solution as you and your business evolve.

- + Open design allows a clear view on the machine for workshop use and the Cube accessory makes it perfect for customer facing use.

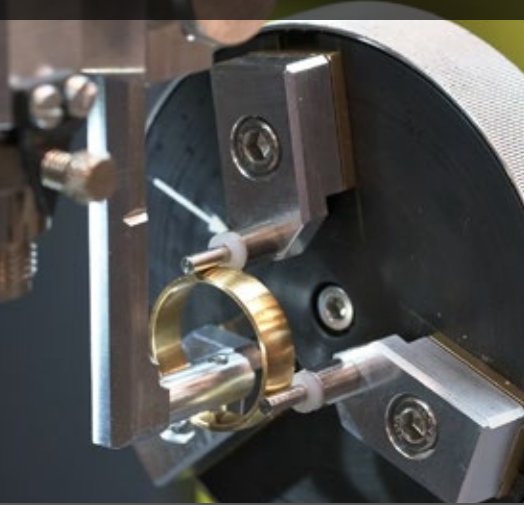
Displayed accessories (from top to bottom):
 Gravogrip, Plastic jig, Jewelry jig, Vice Raiser, Deep Vice, Chip Collector
 Cube, M20
 Tablet and Holders, Pen attachment, Ring Deep Engraving, Jewel attachment, Pix head



Gravotech has been creating specific engraving solutions for more than 80 years: our creations are references. Our brand manufactures machines, software, consumables and services, our 360° offer supports you in all your marking needs. We are present in more than 100 countries, from independent craftsmen to international luxury brands.

Discover the M20, the simplest and most versatile rotary engraving solution!

ROTARY DEVICE



- +** Interior and exterior engraving of rings
- +** Precise positioning of jewelry
- +** Deep engraving and cup options available

CHIP COLLECTOR



- +** Automatically collects engraving debris for a clean and tidy work area
- +** Small and compact
- +** Quiet

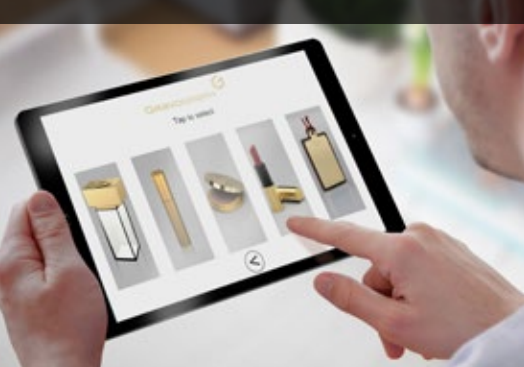
TABLET & HOLDER



- +** Computer free all in one solution
- +** Easy access and easy to use
- +** Allows direct customer use

SOFTWARE all levels

NOVICE



abc catalog

- Item catalog
- Automated settings and engraving positioning
- No training required

BEGINNER



abc

- Intuitive software
- Free composition
- Engraving parameter library

EXPERT

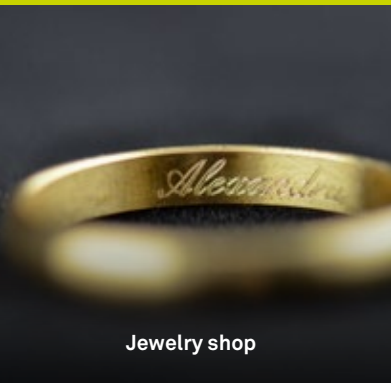


GRAVOSTYLE™

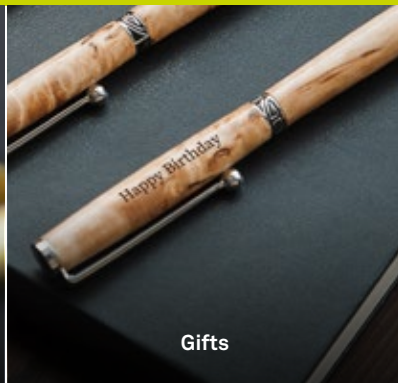
- Make full use of the M20's capabilities
- Imports of drawings, logo retouching
- Advanced engravings: photos, bas-relief, specific tool path
- Dedicace™ - Engrave your hand writing or drawing in just a few clicks

A SOLUTION TAILORED TO EACH USER PROFILE

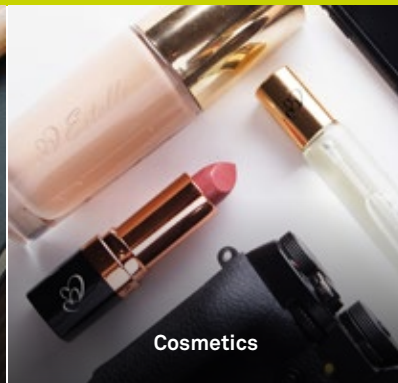
APPLICATIONS



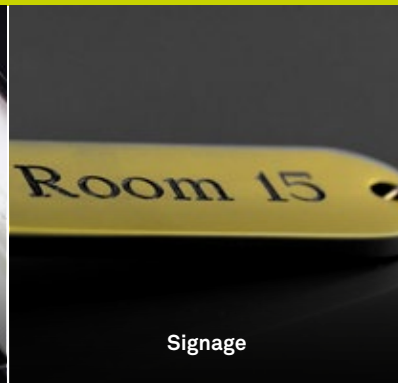
Jewelry shop



Gifts



Cosmetics



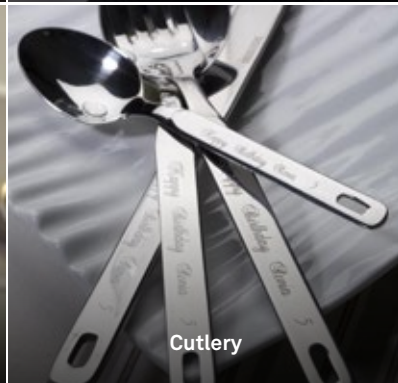
Signage



Glassware



Industrial Engraving



Cutlery



Trophies / Medals

TECHNICAL SPECIFICATIONS

m20

Technology	Diamond and Cutter
Materials	The most accurate on all materials
Dimensions L x D x H (in)	13.780 x 14.764 x 14.173
Dimensions with Cube L x D x H (in)	13.780 x 14.764 x 15.944
Weight (lb)	26.455
Engraving area L x D x H (in)	3.937 x 3.937 x 3.937
Object to be engraved dimensions L x D x H (in)	7.480 x 4.331 x 3.937
Diameter for rings (in)	0.472 to 0.984



Hansen Supply
 406 164th St SW
 Lynnwood WA 98087
 www.hansensupply.com | info@hansensupply.com
 800-782-1235



GRAVOTECH

leaflet-M202020-09-V1-en-US- The information, photos and illustrations contained in this document are not binding and can be modified without notice. Gravostyle™ and Lasertrace™ are used, pending or registered trademarks of Gravotech Marking SAS or any other company of the Gravotech Group. © 2020 Gravotech Group - Gravotech Marking - 466 rue des Mercières - Z.I. Périca - 69140 Rillieux-la-Pape - France. SAS au capital de 11 531 016€ - SIREN : 334 818 515 RCS Lyon.



Certified sites :
 France: Gravotech Marking SAS
 China: Gravotech (Shanghai)
 Engraving Equipment C6, Ltd